

# Delphi Prism™

## Delphi Development Solution for .NET and Mono

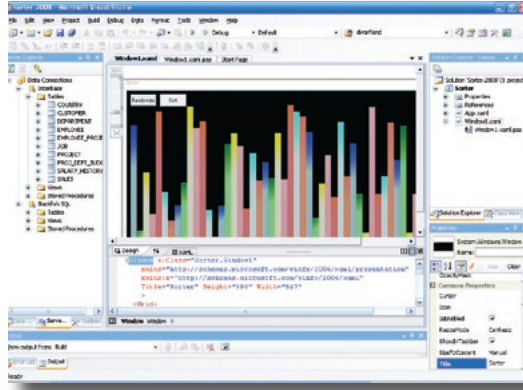


**EMBARCADERO**  
TECHNOLOGIES®



Embarcadero® Delphi Prism™ 2010 is the fast way to build .NET, ASP.NET, data-driven, and cross-platform Mono applications. Delphi Prism includes a full IDE and powerful programming language with features not available in other .NET programming languages. You can target Windows®, Linux® and Mac OS® X using Mono, connect with all your data, and work with the latest .NET technologies including WPF and LINQ.

- Push the envelope with a powerful, full-featured development language
- Work with all your data sources
- Gain deployment flexibility for .NET, Mac and Linux
- Make the connection to multi-tier
- Design for the desktop with Windows Forms and WPF
- Bring new power to your Web applications



Rapidly build applications using WPF, ASP.NET, Windows Forms and more

### PUSH THE ENVELOPE WITH A POWERFUL, FULL-FEATURED DEVELOPMENT LANGUAGE

Delphi Prism provides a highly readable, advanced language for the Microsoft .NET Framework and other implementations of the Common Language Runtime (CLR). While staying true to its Delphi and Pascal roots, the modern Delphi Prism language helps developers move into the future by providing innovative language features such as Aspect Oriented Programming (AOP), generics, sequences, queries, and parallel computing.

### WORK WITH ALL YOUR DATA SOURCES

Delphi Prism leverages ADO.NET for database connectivity in .NET applications. In addition, Delphi Prism provides developers with a database access framework called dbExpress for fast, easy access to Embarcadero's InterBase® and Blackfish™ SQL databases. ASP.NET developers can provide support for membership, roles, profiles, and the other features of the ASP.NET provider interface for multiple backend databases.

### GAIN DEPLOYMENT FLEXIBILITY FOR .NET, MAC AND LINUX

Delphi Prism supports development for the Mono platform and other implementations of the .NET CLR. Developers can compile code against multiple CLR platforms, including Mono for Linux and for the Mac for cross-platform deployment. The Delphi Prism compiler is a completely native .NET application and can move to other CLR implementations such as Mono. And Delphi Prism will run under these alternative CLR platforms and supports cross-linking against them.

### MAKE THE CONNECTION TO MULTI-TIER

With Delphi Prism Enterprise, developers can create .NET client applications that interact with Windows native DataSnap application servers developed with Delphi. Clients can access server methods as well as the traditional IAppServer interface-based DataSnap servers.

### DESIGN FOR THE DESKTOP WITH WINDOWS FORMS AND WPF

With Delphi Prism, you can leverage the powerful and time-proven Windows Forms designer in Visual Studio, including support for partial classes and choose from the wide variety of available third party WinForms components. If you choose to use Windows Presentation Foundation (WPF) for desktop applications, Delphi Prism provides full design-time and run-time support for WPF.

### BRING NEW POWER TO YOUR WEB APPLICATIONS

For Web application development, Delphi Prism provides full support for ASP.NET and for Silverlight when installed into Visual Studio 2008. Delphi Prism developers can use the full extent of the Visual Studio designers for these platforms as well as the entire eco-system of third-party components for these web development platforms.

### Key Features

- Delphi Prism programming language for .NET
- Visual Studio based IDE included or install into Visual Studio
- Support for the latest .NET technologies
- .NET standard ADO database connectivity plus dbExpress for InterBase and Blackfish SQL
- Build DataSnap .NET clients to connect to Delphi multi-tier middleware
- ASP.NET development for Web apps
- Target Windows, Linux and Mac OS X using Mono

### New! in Delphi Prism 2010

- Aspect Oriented Programming
- Improved compatibility with Delphi
- New "Optimize" compiler/project option
- Dynamic types in .NET 4.0
- DataSnap 2010 including HTTP communication protocol
- And much more!



POWERED BY THE  
**RemObjects**  
Oxygene™ Compiler

Feature	Description
<b>Delphi Prism</b>	
<b>Delphi Prism Language</b>	
Parallel Programming Features	Includes futures, parallel loops, asynchronous code blocks, locked/locking directives for parallel programming and support for the new parallel libraries of .NET 4.0
LINQ Query Expressions	Combines the querying capabilities of database languages such as SQL and applies it to any type of data, natively within the Delphi Prism language
Property Notifications	Makes it easy to develop solutions that follow the model/view/controller design pattern
Bundled Language Features	Includes enhanced nullable types, class contracts, enhanced constructor calls, and class references
Aspect Oriented Programming	Change the behavior of code, add or remove fields, properties, events or methods and even extra classes
Delphi based language	Supports writing managed applications using a modern language with roots in Pascal and Object Pascal and familiar syntax for Delphi developers
Code Flow Analysis and FxCop Code Analysis	Checks the source for unreachable statements, unused local assignments, locals that aren't set before they're used and more. Provides code analysis, which checks .NET assemblies for conformity to development guidelines.
<b>Target Multiple Platforms</b>	
.NET 1.1, 2.0, 3.0, 3.5, and 4.0	Target multiple .NET versions
Mono 2.4 for Windows, Linux and Mac OS X	Supports multi-platform deployment of applications using Mono, an open source implementation of a .NET compatible runtime and toolset
<b>Integrated Design Environment (IDE) and Visual Studio Integration</b>	
Standalone or Visual Studio integrated install	Provides the flexibility to install as a standalone application using the included Visual Studio 2008 Shell or integrate seamlessly with an existing install of the Visual Studio IDE
Windows Forms, WPF and ASP.NET form designers	Enable visual design of Windows and Web applications
Code Editor with IntelliSense, method hints and error markers	Speed coding with a code editor that completes statements and code fragments using pop-ups and auto-completion, hints that show the possible parameters for a given call, and markers that appear beneath potentially incorrect code
Integrated Debugging	Quickly find and fix errors with a full set of local, managed, cross-thread and multi-process debugging tools
<b>Web Application Development</b>	
ASP.NET development	Delphi Prism provides extensive support for the ASP.NET 2.0 project system provided with Visual Studio including a dbExpress ASP provider for ASP.NET
Editor support for ASP.NET	Full IntelliSense, code completion from .aspx to .aspx.pas file, Delphi Prism syntax highlighting inside <script> and <%...%> tags inside the .aspx; and full line mapping support
<b>Database Application Development, Access and Design</b>	
ADO.NET database connectivity	The .NET programming environment for building database applications based on native database formats or XML data
dbExpress connectivity to Blackfish SQL and InterBase	Provides ADO.NET connectivity to InterBase and Blackfish SQL. Supports local connectivity in the Professional edition and both local and remote server connectivity in the Enterprise edition
Server Explorer	Server management window used to open data connections and to log on to servers and explore their databases and system services
DataSnap	Enables building .NET DataSnap client applications that access a middle-tier application server that contains and manages remote data modules.
Blackfish SQL database	Development and royalty free deployment license for the fully managed, SQL-compliant, highly portable, embedded database
InterBase SMP Developer Edition	Twenty user developer edition of the highly scalable, powerful, embeddable database

<b>System Requirements</b>	
<b>Supported Architectures:</b> <ul style="list-style-type: none"> <li>• x86</li> <li>• x64 (WOW)</li> </ul> <b>Hardware Requirements:</b> <ul style="list-style-type: none"> <li>• Minimum: 1.6 GHz CPU, 384 MB RAM, 1024x768 display, 5400 RPM hard disk</li> <li>• Recommended: 2.2 GHz or higher CPU, 1024 MB or more RAM, 1280x1024 display, 7200 RPM or higher hard disk</li> <li>• On Windows Vista: 2.4 GHz CPU, 768 MB RAM</li> <li>• 1 GB of available space required on system drive</li> <li>• 2 GB of available space required on installation drive (includes space for .NET Framework and SDK)</li> <li>• Mouse or compatible pointing device</li> </ul>	<b>Supported Operating Systems:</b> <ul style="list-style-type: none"> <li>• Windows XP Service Pack 2 or above</li> <li>• Windows Server 2003 Service Pack 1 or above</li> <li>• Windows Server 2003 R2 or above</li> <li>• Windows Vista</li> <li>• Windows Server 2008</li> </ul> <b>Visual Studio Integration:</b> <ul style="list-style-type: none"> <li>• Install standalone or integrated into Visual Studio 2008</li> </ul>

Download a Free Trial at [www.embarcadero.com](http://www.embarcadero.com)

Corporate Headquarters | Embarcadero Technologies | 100 California Street, 12th Floor | San Francisco, CA 94111 | [www.embarcadero.com](http://www.embarcadero.com) | [sales@embarcadero.com](mailto:sales@embarcadero.com)